

2017-2018  
ANNUAL REPORT



COMPASS FAMILY SERVICES  
Housing. Support. Hope.

Every Child Needs a Safe  
and Stable Home

# Our Mission

Compass Family Services helps homeless families and those at imminent risk to achieve housing stability, economic self-sufficiency, and well-being.

# Dear Friends,

At Compass Family Services, we have a bold and ambitious mission to end family homelessness in San Francisco by assisting homeless and at-risk families to secure stable housing, and achieve economic self-sufficiency and emotional and physical well-being.

While San Francisco continues to grapple with a growing housing and homelessness crisis, Compass has remained committed to providing high-quality services and support for our city's most vulnerable families in their greatest time of need.

Over the past year, we have assisted 5,143 homeless or at-risk parents and children. This support has been in the form of 35,522 nights of housing and shelter, nearly 3,000 mental health counseling sessions, over 78 hours of parent education classes and workshops, and so much more. Alongside the 200,000 hours of enriched early care and education we provided directly to at-risk children ages 0-5, we helped secure placements for an additional 168 children into childcare, freeing up all of these parents to work, attend school, and search for housing.

In operating the new Central City Access Point this past year, we continued to see and help the majority of families experiencing housing instability in San Francisco, providing assessments for 686 families facing homelessness. We also expanded our rapid rehousing work and are proud that 94% of families that graduated from our housing programs remained stably housed.

In the face of an increasingly inaccessible real estate market, Compass Family Services faced its own housing crisis. In an effort to ensure the organization's stability and our ability to provide these vital services to homeless families for as long as they are needed, we began to explore the possibility of establishing a new service hub in San Francisco. Thanks to the vision and persistence of our Board of Directors over the last year, we were able to purchase a building directly in the heart of the city, in the Civic Center neighborhood. Our new service hub for homeless families is centrally located, easily accessible by public transportation, and designed

to be warm and welcoming, sending the message to vulnerable families: we see you, we are not going anywhere, and we are investing in your future. Families can now enter Compass from street level through a single door and have immediate access to a comprehensive set of services, from childcare, to mental health counseling, to employment resources and housing placement support. Since our move, we have transformed the building into a beacon of hope for all families seeking assistance and are positively impacting the immediate neighborhood.

We remain steadfast in our commitment to ending family homelessness, and with your generous support for our new service hub for homeless families and our three-year comprehensive fundraising campaign, we plan to expand our overall capacity and accomplish even more in the future.

We are honored and encouraged to partner with you, and grateful for your dedication of time, energy, and resources to advance our shared mission. As we focus on the future, we hope that you will continue to support our vision and help us to ensure that San Francisco remains a place that all families can call home. Thank you!



Erica Kisch, LCSW  
Executive Director



Chris Wagner  
Board Chair



# Leadership

## Board of Directors

Christopher Wagner, *Chair*  
Alison Engel, *Vice-Chair*  
Tim Moffet, *Treasurer*  
Doug Goelz, *Secretary*  
Jeff Cain  
Jennifer Christie  
Robert Daoro  
Steven Dinkelspiel  
Chad Dyer  
Nancy Field  
Dennis Gibbons  
Meghan Harris  
Valerie Houts  
Lauren Kowal  
Michael McCarthy  
Brian McInerney  
Krista Moatz  
Lisa Odyniec  
Anne Parish  
Laurel Severt  
Rosalind Solon Morris  
Adam Tait  
Katie Traina  
Stephanie Zeppa

## Honorary Directors

JoAnn Bertges  
Stephanie Fredericks  
Sloan Klein  
Diane Larrabee  
Sara Lemke-von Ammon  
Kyri McClellan  
Mary Noel Pepys

## Executive Director

Erica Kisch, LCSW

## Leadership Council

Laurel Severt, *Chair*  
*Hirsch & Associates*  
Dustin Durham, *Vice-Chair*  
*Boudin Enterprises*  
Dominique Ta, *Secretary*  
*University of San Francisco*  
Laura Chan, *Twitter*  
Katie Garrity, *Deutsche Bank*  
Kathleen Hegyesi, *Flexport*  
Gretchen Hollstein,  
*Litman Gregory*  
Grace Lee, *Wells Fargo*  
Alex Mandel, *Google*  
Tim Marks, *Twitter*  
Marianne Meyer, *Salesforce*  
Laura O'Leary, *Comerica Bank*  
Kelly Salance, *Zendesk*  
Matthew Salesi, *Apple*  
Minal Shankar, *Northgate Capital*  
Susy Shöneberg, *Flexport*  
Linsey Thornton, *BlackRock*  
Megan Trotter, *Zendesk*  
Molly Winston, *Bank of America*  
Katie Zipper, *Gliffy*



# Our Programs Work

We provided services to 5,143 parents and children last year. 52% of our clients were children under 18 years of age.

94% of families who complete our housing programs remain stably housed.



  
**neighbor**  
FAMILY FRIENDLY COMPUTER CENTER OFFERING COMPUTER TRAINING WITH CHILDCARE FOR HOMELESS FAMILIES.



# Housing

## Expanding Housing Opportunities

In response to the inaccessible Bay Area housing market and the difficulties that families face finding affordable housing units, the Compass SF HOME program established its Housing Outreach Team to increase access to available and appropriate housing solutions for homeless families in the San Francisco Bay Area.

The Housing Outreach Team maintains excellent relationships with our existing portfolio of landlords at the same time that they work diligently to build new landlord relationships. Last year, Compass added more than 100 rental units to our portfolio of more than 300 housing units across the Bay Area.

In the last year Compass:

- Expanded access to housing for homeless families with our new Section 8 Voucher program
- Successfully housed 89% of families in our Section 8 Housing, Outreach and Navigation program
- 225 families participated in Compass housing workshops



### Compass Housing Facts

- 53 families stayed at Compass Family Shelter
- 6 families graduated into stable housing from Compass Clara House, our 18- to 24-month transitional housing program
- 183 families received rental subsidies
- 152 families received case management services that helped them retain their housing
- 132 families were helped to secure stable housing
- 258 families participated in consultations for legal assistance to address housing barriers
- 75% of families were able to increase their income after one year in Compass Case Management programs



# Michelle

Michelle came to Compass in 2015 with her 1-year-old son, Anthony, when they were homeless and separated from her husband, Robert, and their other son Xavian. Robert was serving two years in prison and 8-year old Xavian was living with Michelle's mother. Michelle had lost her housing in 2014 when she entered an inpatient treatment program for women and children.

Michelle and Anthony were accepted to Compass Clara House, our intensive 18- to 24-month transitional housing program for homeless families. Over the course of the next 22 months, Michelle's family was completely restored and became stronger than ever.

First, Compass Clara House case managers and clinical staff worked with Michelle on addressing her recovery process through outpatient treatment. They also supported her determination to get her education and on a pathway to a career. As Michelle became more and more stabilized, Robert and Xavian were gradually reintegrated into the family.

Compass helped Michelle and Robert find housing in Yuba City and both were fully employed and completely off public assistance when they settled into their new home and life.



**“If you want a better life, you have to really want to go after it full force. Compass Clara House empowers mothers and fathers to find their own success for their families.”**  
– Michelle

# Support

## Increasing Access to Childcare

Compass Family Services understands how important childcare is for a family trying to get back on their feet. Without it, it's impossible to work or attend school, and very difficult to actively search for housing.

Last year, Compass addressed the childcare need from three angles:

- Provided enriched early care and education for 99 children and their families at Compass Children's Center and Compass' Helen Hawk Children's Center
- Administered the childcare subsidy voucher program for the City of San Francisco, with a team of Compass Childcare Case Managers who linked families facing homelessness with childcare slots and subsidies
- Provided drop-in childcare so parents can participate in case management, therapy sessions, groups and classes without having to worry about what to do with their children

Compass' Childcare Case Management team works intimately with parents to help them access early care and education programs for their children. This work involves everything from assessing childcare needs and preferences, to helping parents choose between center-based and home-based childcare, accompanying families on visits to childcare programs, linking families with the appropriate subsidies, and problem-solving when there are barriers to consistent childcare attendance. Childcare Case Managers also help families to address other needs, including employment, benefits, transportation, lack of documents, and physical and mental healthcare.

Thanks to an expanded investment in early education for homeless children by the late Mayor Ed Lee, the Compass Childcare Case Management team placed children from 151 families into local childcare and early education programs, a 100% increase over the previous year.



### Compass Childcare Facts

- 243 children received drop-in care
- 749 children received childcare at the NeighborNest computer center
- Compass parents attended 521 hours of parenting classes and workshops





# Monica

**When did you first come to Compass Family Services and how did you hear about Compass?**

I first came to Compass at the end of 2016. I had found Compass information at another resource center where they had multiple flyers.

**What was your experience getting childcare with the help of Compass Childcare Case Management?**

It was easy. I was able to get childcare within a week.

**How has having childcare been helpful to you?**

Childcare has been a huge help to me. I think it is important to have childcare first in order to keep your life going. It gives you time to work, make money, and find a stable place to live. I started in a shelter and was able to connect with many resources. During my time at the shelter and having my child at childcare, I was able to work two jobs, allowing me to save up money to find a home.

**How has childcare affected your child?**

Childcare was a great help to my son and I was lucky to have had childcare through the time I was living at the shelter. Childcare became a safe place for my child. He was able to be in a comfortable environment where he could play and enjoy himself without the worry of disturbing others. He uses his voice more to communicate with me when he wants to eat, when he wants to use the bathroom, etc. He also has become more aware of his surroundings and has become more independent.



**“The assistance I received from Compass has been incredible not only for my son, but for me as well. I am very grateful to Compass for making a very high-stakes and stressful process easy!” – Monica**

# Hope

## Improving Wellness through Mental Health Services

Compass Family Services leads the way in family care by creating systems to train and support staff on providing trauma-sensitive services to families.

Trauma-informed services assume that every individual is doing the best that he or she can at any given time to cope with the life-altering effects of trauma. Compass Clinical Services reflects the understanding of the complexities of trauma as well as the range of traumatic experiences associated with homelessness.

Last year Compass therapists provided 2,795 mental health sessions to Compass clients. That's an average of 233 sessions per month.

- 1,444 individual therapy sessions
- 473 child therapy sessions
- 416 child shadowing sessions to observe and address behavioral issues
- 261 family therapy sessions



## Mental Health Support for Compass Staff

- 336 individual consultations across all six Compass programs
- 96 group sessions
- 36 drop-in sessions for extra support
- Monthly all-staff trainings
- New hires attend 6 months of new-staff trainings





# Max

Starting when Max was six years old, he remembers the beginning of many home visits from social workers and his private therapy sessions. At age 12, he and his mother entered Compass Family Shelter after their home was condemned. For the first time, he was able to talk and listen to children who were also struggling.

“Finally I could speak to kids my age. Find some empathy with other youths who’d also been through bad situations... and feel empathy for them in return.”

By the age of 15, Max was living with friends and mostly on his own. However, he continued to attend therapy sessions, which he recognized as a place where he could express himself, get positive feedback, and plan for his future.

Max developed a strong connection with his long-time therapist and Compass Clinical Director, Susan Reider. When it came time for Max to plan for college, Susan helped him navigate his options and the many challenges. Art had always been a big part of his therapy with Susan and his passion for drawing was leading him toward art school.

“Every week she would calmly listen to me, read stories, and watch me draw. Her non-judgmental companionship allowed me to grow in those sessions... I discovered the person I am.”



Max Pauson and Susan Reider, Compass Clinical Director



Susan helped Max apply for scholarships and he was accepted to the ArtCenter College of Design in Pasadena. But Max couldn’t afford the move, the tuition and the living expenses. Susan connected Max with funding from *Children of Shelters* and he was finally set to pursue his dreams.

After graduating, Max launched a very successful career in television animation, working for Disney, Nickelodeon, DreamWorks, and most recently as the design lead on the Emmy Award-winning show *Rick and Morty*.

**“A lot of people believe family is something you inherit. One of my core principals is that family is something you build. From the communities that support you, and from the communities you end up supporting in the end.” – Max Pauson**



# Using Data

## To Improve Client Outcomes: Compass Impact + Learning

At Compass we are invested in creating a learning culture that leverages data to inform program decisions in order to increase the impact of Compass services and improve outcomes for the families we serve.

Last year, the Impact + Learning team:

- Facilitated 12 participatory data sessions with program teams and significantly developed 34 staff members' skills and confidence in data analysis
- Generated more than 20 sophisticated yet user-friendly data dashboards that enable Compass to closely monitor client outcomes, program impacts, and demographic trends
- Improved Compass' ability to maintain communication with families after they graduate from Compass programs



Compass' Department of Impact + Learning team in training session with Compass program staff

# Securing Our Future

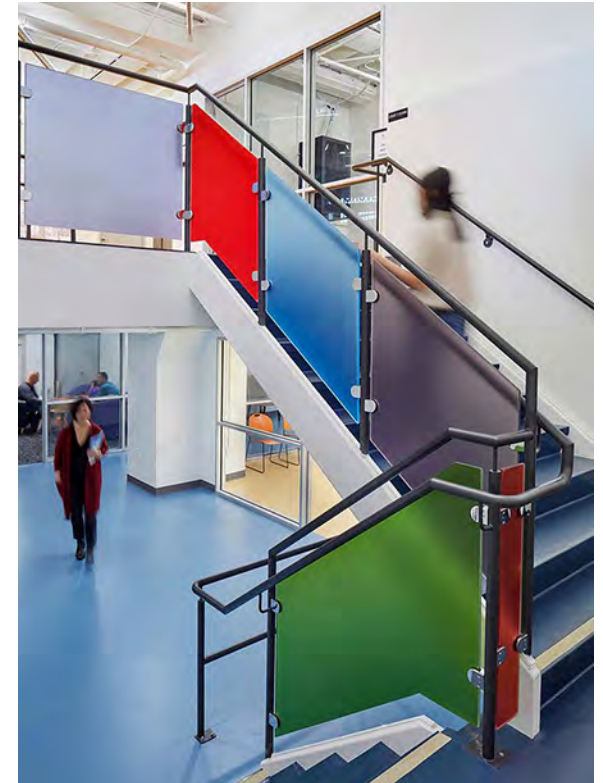
## Creating a Permanent Service Hub for Homeless and At-Risk Families in the Heart of San Francisco

With commercial rents skyrocketing in San Francisco, we found ourselves facing an existential crisis. Our leases were expiring in two of the rental properties upon which we depended to run several of our direct service programs and house our administrative offices, and we were facing the prospect of quadrupling rents.

In order to control our destiny, we identified and acquired a building in the heart of San Francisco and created our new Service Hub for Homeless Families. With this tremendous project we are:

- Ensuring San Francisco families facing a housing crisis continue to have access to Compass' comprehensive continuum of services
- Sustaining the organization by putting Compass on sound financial footing well into the future
- Sending the message to vulnerable families—we see you, we are not going anywhere, and we are investing in your future

We hope you'll come visit!





# Government Funding

## California Department of Education:

- Child Development
- Child Nutrition Program

## Emergency Food and Shelter National Board Program

## First 5 – San Francisco Children and Families Commission:

- Preschool For All
- Family Resource Center Initiative

## San Francisco Department of Homelessness and Supportive Housing

## San Francisco Human Services Agency:

- Office of Early Care and Education
  - Early Learning Scholarships
  - Early Care and Education Case Management for Homeless Families

## San Francisco Mayor's Office of Housing/Office of Economic and Workforce Development:

- Section 8 Housing Outreach and Navigation for Families
- Emergency Shelter Grant Program
- Community Development Block Grant Program

## U.S. Department of Housing and Urban Development:

- Supportive Housing Program
- Supportive Housing Program – Homeless Prevention and Rapid Re-Housing Program





# Financials

Fiscal Year Ending June 30, 2018

## Statement of Activities

### Revenues

Government Grants (City, State, and Federal)	\$ 8,638,324
Contributions and Events	5,363,597
Program Fees	49,152
Investment and Other Income	120,166

**Total Revenues** \$ 14,171,239

### Expenses

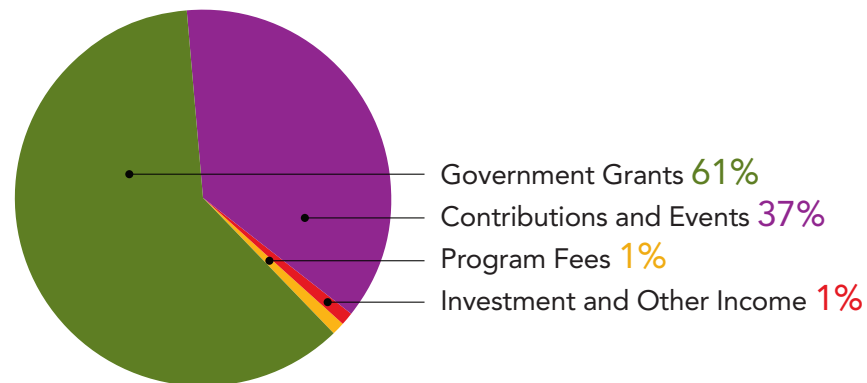
Program Services	\$ 9,740,341
Management and General	1,316,923
Fundraising	770,964

**Total Expenses** \$ 11,828,228

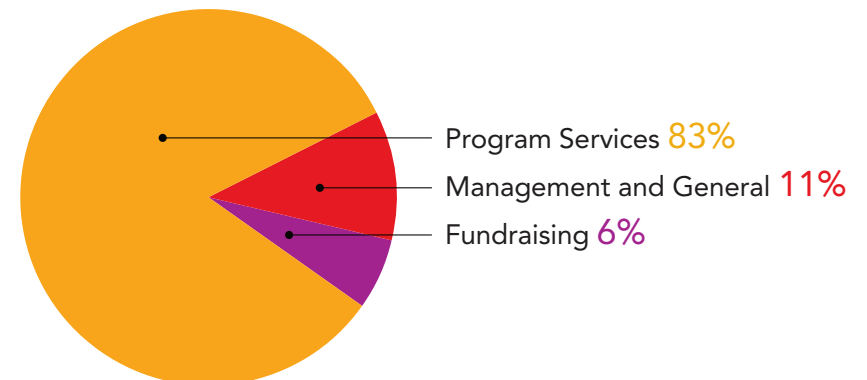
Change in Net Assets	\$ 2,343,011
Net Assets, Beginning of Year	\$ 11,282,755
Net Assets, End of Year	\$ 13,625,766

*Note: the large change in net assets is due to the campaign for the building purchased in September 2018.*

## Revenues



## Expenses



# Compass Volunteers!

500 Volunteers  
12,000 Hours of Service





# Our Donors

Thanks to the loyal and generous support of our individual donors, Compass Family Services continues to be San Francisco's longest operating family safety net, leading the way in helping families facing homelessness secure stable housing, and attain economic self-sufficiency and family well-being.

The following list reflects gifts received between July 1, 2017 and June 30, 2018. Each gift powers our mission to help families achieve long-term stability and success. Thank you!

## Dream Maker \$100K+

Anonymous  
Tenah and Chad Dyer  
Alison and Peter Engel  
Priscilla and Keith Geeslin  
Anne and Michael Parish  
Katie and Todd Traina

## Home Provider \$50K+

Nancy Field and Kyle Anderson  
Lee Flynn  
Catherine and John Kilroy  
Karen and Christopher Wagner

## Education Proponent \$25K+

JoAnn and Jack Bertges  
Victoire Reynal Brown and  
Owsley Brown  
*California Credit Debit Card  
Tying Case*  
Joanie and Bob Daoro  
Dana and Robert Emery  
Lisa Erdberg and Dennis Gibbons  
Meghan and Greg Harris  
Christina and John Keker  
Krista and Aaron Moatz  
Tim Moffet  
Ashley and Minott Wessinger  
Diane Wilsey

## Parent Advocate \$10K+

Sylvia and Malcolm Boyce  
Carolyn and Chris Colpitts  
Beth and James Gassel  
Doug Goelz  
Erica and Ken Gregory  
*Handup PBC*  
Stephen T. Hearst  
Judith Hellman



Laura Chan Pytlarz, Casey Junod and  
Maya Seshadri attending Compass  
Spring Benefit

Kathy and Rick Kimball  
Brian McInerney  
Nazgol and Barmak Meftah  
Sobia and Nadir Shaikh  
Rosalind Solon Morris  
Chuck Williams  
Lisa and Todd Zabelle

## Skills Builder \$5K+

Barbee and Bruce Callander  
Julie Chaiken  
Lorin and Dick Costolo  
Joseph Demko  
Tomoko and Don Fortune  
Josie and Brian Freckmann  
Andrew Gaubatz  
Shannon Gilmartin and Jeff Cain  
Linda Goldberg  
Barbara and Bill Hazen  
Sara and Derek Lemke-von Ammon  
Leigh and William Matthes  
Lela Means  
Jessica and Jason Moment  
Libby and Damian Ornani  
Stacy and Matthew Perry  
Anne-Marie and Wylie Peterson  
Gina and Stuart Peterson  
Leslie and Nick Podell  
Laura Roebuck and  
William Meehan  
Jocelyn Ross and Ben Blumenfeld  
Yael and Itamar Simonson  
Jenny and Will Stegall  
Summer and Brooks Walker

## Job Coach \$2.5K+

Anonymous  
Deborah and Chris Albinson  
Martha Angove and Carl Kaufman  
Judith Barringer  
Leith and Stewart Barry



Sonia Scott attending Compass Spring Benefit

Michelle and John Battelle  
Nancy and Joachim Bechtle  
Pamela Burke  
Jennifer Caldwell and  
John H.N. Fisher  
Samantha and Shawn Cross  
*Curwood Consulting Group LLC*  
Hadley and Ethan Dettmer  
Jeanne Dinkelspiel  
Pamela and Steven Dinkelspiel  
Holly and Rick Elfman  
Randi and Bob Fisher  
*Fritz Property Group, Inc.*  
Sarah and Scott Gilbertson  
Jane and Wyatt Gruber  
Katherine Gunther and Daniel Zoll  
Hatchett-Moore Family  
James C. Hormel  
Elizabeth and Oliver Jenkyn  
Victor Kisch  
Diane Larrabee  
Jeffrey Matthews  
*Maximus Foundation*  
Stacy and Michael McCarthy

Judy McGrath  
Christie and Michael Meehan  
Steven Miller  
Lida and David Morgenstein  
*Nossaman LLP*  
Lisa Odyniec and John Donovan  
Samantha and Matt Rolandson  
*The Safeway Foundation*  
Minal Shankar  
Jane and Paul Stewart  
*Venable Foundation*  
Alexandra and Spencer Wells  
Judith Wilhite  
Alex Witherill  
*XL Catlin*

## Family Supporter \$1K+

Anonymous  
Nancy and Doug Abbey  
Teresa and Joel Backman  
Janice and Matthew Barger  
Vickie and Philippe Barret  
Carolyn and Frank Basile



Courtney Benoist and Jason Fish  
 Carol and Shelby Bonnie  
 Kelly and Charlie Boyd  
 Max Boyer Glynn and David Glynn  
 Heidi Breena and Alex Fisher  
 Mollie Brown and Warren Browner  
 Laura Brugger and  
 Ross Sappenfield  
 Christina Carroll  
 Marie A. Chandoha  
*Chapman and Cutler, LLP*  
 Kathryn Chinn  
 John Clawson  
 Kathy Coffey  
 Amy Coleman  
 Nancy and Chris Connery  
 Gregory Corvi  
*Credo*  
*DGA Planning Architecture  
 and Design*  
 Ann and Ronald de Vogel  
 Michael Derusha  
 Stephanie DiMarco and  
 Jim Harleen  
 Frances Dinkelspiel and  
 Gary Wayne  
 Nancy and Joseph DiSabato  
 Jessica and Scott Engelman  
 Zoe and Scott Faber  
*Falletti & Baldocchi Finer  
 Foods, Inc.*  
 David Farrell  
 Laura and John Fisher  
 Tom Frankel  
 Stephanie and Dick Fredericks  
 Alison F. Geballe  
 Margot N. Golding and  
 Michael Powers  
 Penelope Goldsmith  
 Adriana Gores and John Lamm  
*The Greek Orthodox Metropolis  
 of San Francisco*



Bank of America team attending Compass Spring Benefit; Lokelani Nevin, Wendy Venegas, Joe Gotelli, Janvi Doshi, Max Ortiz, Lacerra Rogers, Joanne Agcaoli

Tara Higgins  
 Huey Hua  
 Leslie and George Hume  
 Carla Humphrey  
*Johnson and Johnson Matching  
 Gifts Program*  
 Richard Karoly  
 Liz and Gabe Kind  
 Sloan and Rob Klein  
 Jean and Sho Kuwamoto  
 Marie and Barry Lipman  
 Virginia Lopez  
 Seth Madison  
 Alexandria Marchetti  
 Yanina Markova  
 Mr. and Mrs. J.W.Y. Martin III  
 Alison and Mike Mauze  
 Sarah McCourt and Alex Kryska  
 Michele and Chris Meany

Stephanie and Bill Mellin  
 Claire and Jessica Milligan  
 Elizabeth Moffet  
 Meridee Moore and Kevin King  
 Joel Morris  
 Maryam and Oran Muduroglu  
 Andrea and Scott Nagelson  
 Peter Newell  
*Office*  
 Doria and Michael Paganini  
*Panorama Environmental, Inc.*  
*Paragon Real Estate Group*  
 Julie and Will Parish  
*Paypal Charitable Fund*  
 Ali Pincus  
 Lori and Chris Potter  
 Rahul Ravulur

Patricia Remch and Andy Porat  
 Paula and Robert Reynolds  
 Maggie Rizer and  
 Alexander Mehran  
 Katherine Ross  
 Scott Rubin  
*San Francisco Bay Area  
 Rapid Transit*  
 Sharon Saraniti  
 Janice and Geoff Sears  
 Beatrix and Mike Seidenberg  
 Laurel Severt  
 Rachel Shipp  
 Catherine and Mark Slavonia  
 Jennifer Sockolov  
 Laura and Greg Spivy  
 Lisa and Greg Stanger  
 Caroline Stevens

Peggy and Craig Straley  
 Joe Talmadge  
 Shannon and Jay Thomson  
 Douglas Tom  
 Gail and Phil Towle  
 Sissie Twiggs  
 Kathy Vila Byers and Chris Byers  
 Mary Jane Weaver and  
 Chris Da Cuhna  
 Stacy Webb and Michael Hodge  
 Nancy and Bob Weber  
 Stephanie Wiley  
 Ali and Erik Witte  
 Julie Wulf and Kurt McCracken  
*YourCause*  
 Danell Zeavin and Ronald Stovitz

#### Life Starter \$500+

Krista and Andrew Abrahams  
 Shannon and Cam Anderson  
 Tiffany Apczynski  
 James Assing  
 Janice Azebu and  
 Diane Dunwoodie  
 Marti Baroodly and  
 Michael Joseph  
 Taraneh Bastani  
 Wally Beard, Jr.  
*S.D. Bechtel, Jr. Foundation*  
 Teena Berman and Owen Hart  
 Sandy and Tom Bertelsen  
 Celeste and Mick Bobroff  
 Vandy and David Boudreau  
 Mary Carp  
 Alexis Causey  
 Anne Chambers  
 David Chan  
 Paulette and Elmer Chinn  
 Michael Coates  
 Kathryn Collings  
 Catherine Conk  
 Rob Cotterman and Rob Giljum



*Craigslist Charitable Fund*  
 Vanessa Crews  
 Susan Davenport and  
 Michael Grosse  
 Eileen and Nicholas Demko  
 Patrick Dennis  
 Carol Dimeling Gee and  
 Timothy Gee  
*Docker*  
 Elizabeth Dodd and Jim Boddy  
*Dolby Match Program*  
 Mary Donovan and James Devine  
 Catherine Drybrough  
*Duane Morris*  
 Peter Dworkin  
 Sandra and James Earl  
 Ross Edwards  
 Giovanni Elia  
 James Ellis  
 Jacqueline and Christian Erdman  
 James Fabris  
 Andrea Ferretti  
 Camila and Matt Field  
 Barbara Foley  
 Deb Frederick  
 Audrey Fukuman  
 Nina Gardner

Leslie Gordon and Craig Etlin  
 Helen Hilton Raiser  
 Helen and Jim Hobbs  
 Gretchen Hollstein and Jim Mayer  
 Ruthie and Alan Hook  
 Frances Jack and Bob Rider  
 Melissa and Chris Jaehnig  
 Jessica and Kirk Kaludis  
 Megan and Sandy Kaplan  
 Marylou Karp and Ken O'Brien  
 Daniel Kent  
 Jill Kitazaki and Derek Garvens  
 Kathy Klein and Scott Fink  
 Arlene and Steve Krieger  
 Kelsey Lamond  
 Jonathan Leidy  
 Nancy Livingston and Fred Levin  
 Patricia and Dexter Louie  
 Lawrence A. Margoles  
 Camille and Brad Marks  
 Chris Marver  
 Peggy Matson and Duane Nelsen  
 Joe McCarthy  
 Patricia McCormick  
 Sarah and Paul McNitt  
 Fran and David Meckler  
 Lily Mirels and Michael Levine  
 Anne Moon  
 Martina and Tom Murphy  
*Nelson Nygaard Consulting*  
*The OutCast Agency*  
*Pac-12 Conference*  
*Paulette Taggart Architects*  
 Chad Perbeck  
 Lisa Pritzker  
*QlikView*  
 Steven Ragland  
 William Rainey  
 Krista Ramonas and  
 Gordan Rubenstein  
 Michael Rockefeller  
 Marian Rubin

Jakka Sairamesh  
*Salesforce Matching Gifts*  
 Catarina Schwab  
 Christine and Bret Sewell  
 Elizabeth Shelly  
 Al Sisto  
 Jason Smith  
 Radiah and Ben Smith-Donald  
*Starbucks Foundation*  
 Crystal Taylor  
 Kathy and Kurt Taylor Gaubatz  
 Linsey Thornton

Michael Whitmire  
 Kendall Wilkinson  
 Patricia Wren  
 Kelly and Paul Wright  
**Inspired Stabilizer \$250+**  
 Sy Aal  
 Genevieve and Matthew Anderson  
 Kofi Asante  
 Sandra Bagnatori  
 Anne and Albert Baldocchi

Annette Brands  
 Barbara and Nicholas Brereton  
*Brooks Family Fund*  
 Emilia and Tad Buchanan  
 Peter Buckingham  
 Lesley Bunim  
 Amy Christensen Curby  
 Jan Cohen  
 Danny Conway  
 Anita Crompton  
 John Cunningham  
 Alec Dafferner



Sutter Health CPMC team attending Compass Spring Benefit; Jeff Cretan, Juliana Bunim, Jessica Newman, Alan Newman, Emily Webb, Karen Stander, Colt Stander, Cecilia Thomas

Zabrina Tipton  
 Megha and Nirav Tolia  
 Anita Trachte and Timothy Mason  
 Charlotte and Scott Tracy  
 Deborah and Robert Van Nest  
 Pamela Villarin  
 Kathleen and Billy Volkmann  
 Natalie Walrond and  
 John Brockland  
 Melanie Westfield

Joy Battaglia-Ghamgosar  
 Wallace Beard  
 Lindsay Beckham  
 Allison Bellizzi  
 Julia and Allen Benello  
 Geri Bergantino  
 Roger Booth  
 Caryn Bortnick  
 Erin Bourne

Aric Davis  
 Hilary Davis and  
 Michael Zukerman  
 Christine De Voto  
 Lori Dietrich  
*Direct Dental & Marin Benefits*  
 Amy and Cyrus Driver  
 Katelyn Ellis-Hill  
 Peter Enns



Cherielyn and Tom Ferguson  
 Ashley Fleischacker  
 Cary Fleisher  
 Karena and Matt Fowler  
 Sherri Franklin  
 Nicholas Friedman  
 Brianne Gagnon  
 Jeff Gamble  
 Katie Garrity  
 Mimi Gauss  
 Wayne Gaw  
 Russell S. Gill  
 John Gilmer  
*Girl Scout Troop 33532*  
 Diane and David Goldsmith  
 Amanda Hamilton  
 Nicole Held  
 Stephen Hessel  
 Jane and Stephen Heumann  
 Caroline Hollis  
 Charlyn Hook  
*Hopelab*  
 Adrienne Iglehart

Arif Janmohamed  
 Alexander Jonlin  
 Lester Kakol  
 Robert Kaplan  
 Susan and Ron Kase  
 Nancy Kehoe  
 Jordan Kersten  
 Anand Lakshminath  
 Therese Lawless and  
 Jim Sturdevant  
 Keena Lazuka  
 Grace Lee  
 Lia Lee  
 Toby and Jerry Levine  
 Craig Litman  
 Kathleen Lopez  
 Doreen and Larry Low  
 Brenda and Don MacLean  
*MAG Management*  
 Brandi Mayo  
 Kyri and Aaron McClellan  
 Vicki and Rich McNally  
 Anindita and Keyur Nag



Katherine Nelson  
 Kathleen and Eric Newsom  
 Michelle and Michael Novotny  
 Kathryn Nyrop and Stephen Koch  
 Adelaide Nzeusseu  
 Patrick O'Donnell  
 Janine Okmin  
 Arne Olson  
 Susan Omura  
 Tanya and Rich Peterson  
 Lauren and Paul Picciani  
*Practice Fusion*  
 Matthew Price  
 Jane and Nick Prior  
 Adriana and Jeff Rabkin  
 Bridget Roddy  
 Dora Rose  
 Michael F. Sabarese  
 Suzanne and Robert Sammis  
*San Francisco Federal Credit Union*  
 Roger Scott  
 Gretchen Sisson  
 Jason Steuerwalt  
 Patricia and Alan S. Tai  
 Jessica Teach  
 Stephanie and Keith Tomao  
 Alexandra Topper  
 Mary and Terry Vogt  
 Elizabeth and Roger Waller, Jr.  
 Kristian D. Whitten  
 Jeff Winkel  
 Molly Winston  
 Alexis Woods  
 Amy Wright

#### Friend \$100+

Pamela Abinader  
 Sonya Abrams  
 Gypsy Achong  
 Kushaan Ahuja



Adriana Rabkin, Sam Cross, Lorin Costolo attending Compass Spring Benefit

Ellen Albanese and  
 William Landers  
 Daphne Alden  
 Joy and Jonathan Alferness  
 Dolores Ali  
 Susie Ames  
*Applift, Inc.*  
 Susan C. Aronovsky  
 Nichole Barcelon  
 Caroline Barlerin  
 Trudy Barnes and Chris Pavicich  
 Andrew Barrientos  
*The Bay School of San Francisco*  
 Kathryn Bender  
 Barbara F. Bentley  
 Maureen and Richard Bergson  
 Mark Berkman  
 Martin Berman  
 Alicia Bert  
 Jennifer and Ravi Bhalla  
 Sascha Blevins  
 Traci Bone and Jonathan Lakritz

Lisa Borah-Geller  
 Oriana and Zachary Bosin  
 Sheila Botein and David Oakes  
 Robin Brewer  
 Travis Brier  
 Loree T. Buntin  
 Kristen Burns  
 Monica Burns  
 Elizabeth Burton Ericson  
*Cala Health*  
 Maria Caprio  
 Matt Carbone  
 Jeremy Carroll  
 Sarah Carver  
 Roy Castillo  
 Sabrina Catahan  
*CBRE Foundation, Inc.*  
 Elizabeth Chandler  
 Renee and Andy Charnas



Barrie Charney Golden  
 Catherine and Chris Clifford  
 Julie Cochrane  
 Julie and Will Cockle  
 Deborah Coley  
 Christine Connors  
 Martha Conte  
 Carly Cooper  
 Maureen Coslett  
 Deborah Costigan  
 Jonathan Curtis  
 Elizabeth and John Darr



Diane Wilsey, Yurie and Carl Pascarella  
 attending Compass Spring Benefit

Evie and Matt Davis  
 Gail Defferari  
 Andrea and Chris Dehner  
 Rachel Delphin  
 Dave Denson  
 Graham Dobson and Mick Hughes  
 Wendy Dodds and Sean Fox  
 Sarah Dollens

Lindy Donnelly  
 William Downs  
 Kim Drew  
 Dustin Durham  
 Betsy Eddy and John Wilk  
 Marianne Emblad  
 Peter G. Fairchild  
*Federal Reserve Bank of  
 San Francisco*  
 Jeanne and Koji Felton  
 Allison Ferenstein  
 James Ferguson  
 Lindy Fishburne  
 Susan Fleming  
 Kelly and Chris Fogarty  
 Daniel Foley  
 Carolyn Forsyth  
 Alison and Chris Fragakis  
 Madalyn Friedman  
 Zachary Fuchs  
 Andrea Gallese  
 Frank Gallo  
 Amey Garber and Richard Lesnick  
 Peter Gaylord  
 C.E. Gerndt, Jr.  
 Carolyn Gibbons  
 Angella Gioukaris  
 Kristin Gleeson  
 Stephanie Gluch  
 Chip Grant and John Moore  
 David Gruen  
 Krystyna Grycz  
 Neelabah Gupta  
 Nichole Guy  
 Mardi Hack  
 Peggy Hammett and Rudy Lacoe  
*HandsOn Bay Area*  
 Chloe Hansen  
 Ashley Hanson  
 Delores Harkin

Suzanne and Juan Harrison  
 Patricia and Forrest Haslup  
 Ruth Hauser Wu  
 Elisha Hawkins  
 Sarah Hays  
 Warren Heffelfinger  
 Linda A. Hexem  
 Ina and Hendrik Hoek  
 Beth and Nick Holzworth  
 Sherri Howe  
 Tina Huang  
 Caroline Huger  
 Amy Iacopi  
 Joshua Jaffe  
 Lindsay Johnson  
 Cameo Jones and  
 Ronald Tremblay  
 Virginia and Peter Jozwik  
 Betty Junod  
*JustGiving*  
 Kathleen Kaneko  
 Amy Kangwankij  
 Stacey Kashubeck  
 Jill Keagy  
 Brian Keil  
 Lottie Kendall



Nancy Connery, Sloan Klein, Deb Albinson at Compass Spring Benefit

Matthew Kerkhoff  
 Gavriella Keyles  
 Julie Kidd  
 Naomi and Gilbert Kisch  
 Colleen and Tom Knopf  
 Jill Kuper  
 Julie Labonte  
 Nancy Lacsamana  
 Claire-Marie Laidley  
 Eric Lambrecht  
 Mike Lamfalusi  
 Julie Latham  
 Nigel Lawrence  
 Danielle Lazier  
 Elizabeth Lebrun  
 Robin and David Lee  
 Suzanne Lee  
 Lisa and Christopher Lenzo  
 Shawn Leonard  
 Laura Levenberg  
 Connie Levi and Alan Robin  
 Feralee and Charles Levin  
 Robert Lew  
 Donna Liu  
 Miriam and John Mangini  
 Tracy and John Massaro



Elyssa Match  
 Shannon Matthiesen  
*Maxpro Technologies*  
 Melissa Perkins McAvoy and  
 Sean McAvoy  
 Marion McCall  
 Kathleen McCormick  
 Amy McGiven  
 Kirk McKenzie  
 Sommer McKinley  
 Tasha McVeigh  
 Alexis Meisels  
 Matt Menezes  
 Lora Menter  
 Marilyn Milkman  
 Erin Miller  
 Jackie Miller  
 Jessica Milligan  
 Erica Missildine  
 Kerrin Mitchell  
 Marcia and Douglas Mo  
 Christy and Ravi Mohan  
 Debra Moore



Elizabeth Roth and Ron Katz  
 Sharon Rowley  
 Marci Rubin  
 Katelyn Ruby  
 Miyo Saiki  
 Judith and Alex Saldamando  
 Elizabeth Sander  
 Alison Sanders  
 Sean Sanve  
 Ginny and Stephen Savage  
 Dabney and Dick Schmitt  
 Linda Schneidman  
 Erica Schoefer  
 Caroline Scribner  
 Megin Scully and Reed Minuth  
 Laura Seery  
 Sally and Jim Shapiro  
 Stav Shatzki  
 Margaret Shepard  
 Ashley Shepherd  
 Laura Sherr  
 Grace Shohet  
 Shira and Bill Shore  
 Glenise and William Sibbern  
 Dara Silveira  
 Julie Skaff  
 Taylor Skillin  
 Naomi Smith  
 John R. Solaegui  
 Lori Solomon  
 Elizabeth and Arthur Spander  
 John Speck  
 Diane and Christian Spirandelli  
 Scott Spote  
 Sacha and Joshua Steinberger  
 Emily Stember  
 Celeen and Jonathan Stenzler  
 Melissa Stevenson  
 Tamara Stewart  
 Nancy Stolz and Craig Corbitt

Joanne Sun  
 Dominique Ta  
 Helen and David Teitel  
 Kimberly Tholen  
 Leslie Tietz  
 Hope Timberlake  
 Sara Tresslar  
 Darcy Tsung  
 Jessie Turnbaugh  
 Dahlia Uchihara  
*United Way California  
 Capital Region*  
 Jessica Uppal  
*Urbain Design, Inc.*  
 Victoria Van Zanten and  
 Ron Blandford  
 Quynh Vu  
 Lucy Wahl  
 Donna and John Walton  
 Doris and Clark Warden  
 Carolyn and Robert Webb

Emily Webb  
 Paula M. Weber  
 Laura White  
 John H. Wiest  
 Karen Wilcox  
 Erin Willard  
 Jim Wilson  
 Margaret Winston  
 Allison and Alex Wong  
 Kathryn Alexandra Woods  
 Margaretta and Timothy  
 Woodward  
 Amy and Thomas Worth  
 Toyia Wortham  
 Julie Wu  
 Jane Yeh  
 Diane Ziesing  
 Christina and Phillip Zimbardo  
 Kelsey Ziomek  
 Rebecca Zucker  
 Ying Zuo

Jeanette and Kevin Moore  
 Justa Mui  
 Rinah and David Mullens  
 Mary and David Nakanishi  
 Kari Nelson  
 Ellen and David Newman  
 Alexandra Nixon  
 Heather Nodelman  
 Kristin Novotny  
 Teddy Nykiel  
 Laura O'Leary  
 Kristee Ono  
 Gail Oshima  
 Jeffrey Oster  
 Richard Otter

Samantha Padua  
 Glenda Paterson  
 Whitney Pieper  
 Christine and Chad Portney  
 Charlotte and Josh Prime  
 Kimberly Ratto  
 Alison and Todd Regenold  
 Amy Resner and William Lee  
 Melissa Reyna  
 Julie Richards  
 Jodi and Jeff Riley  
 David Ring  
 Regina Rodgers  
 Sarah Rogers  
 Negina Rood and Andrew Haskins  
 Natalie Ross



Katie Traina and Meghan Harris, co-chairs for Compass Spring Benefit 2018

## Foundations

Long-standing and generous support from foundations has provided Compass Family Services with the capacity to grow when we needed to, weather economic storms that many nonprofits haven't survived, and improve when better tools and techniques were identified.

Compass Family Services is very grateful to our foundation partners whose grants enable us to provide meaningful, trauma-informed, and in-depth programming in all of our service areas.

### **Dream Maker \$500K+**

Mimi and Peter Haas Fund  
Tipping Point Community

### **Future Sustainer \$250K+**

Anonymous

### **Wellness Champion \$100K+**

The David and Janyce Hoyt  
Family Foundation  
Hellman Foundation

### **Home Provider \$50K+**

Bainum Family Foundation  
The Horace W. Goldsmith Foundation  
Silver Giving Foundation

### **Education Proponent \$25K+**

Anonymous  
Evelyn and Walter Haas Jr. Fund  
Walter & Elise Haas Fund  
Willow Springs Charitable Trust

### **Parent Advocate \$10K+**

Anonymous  
Children of Shelters  
George H. Sandy Foundation  
The James A. Folger and  
Jane C. Folger Foundation  
Stearns Charitable Trust  
Stocker Foundation  
William G. Gilmore Foundation

### **Youth Mentor \$5K+**

Fthree Foundation  
Henry W. Bull Foundation  
Papé Family Foundation Trust

### **Skills Builder \$2.5K+**

Ashbury Children's Foundation  
California Community Foundation  
Charis Fund  
Clay Foundation - West  
The Elinor Smith Charitable Trust  
Norman Raab Foundation  
Sadie Meyer and Louis Cohn Foundation  
Wender Weis Foundation for Children

### **Job Coach \$1K+**

Anonymous  
Lewis Greenwood Foundation

### **Family Supporter \$100+**

Auerbach Family Fund

## Community Investment Grant

Compass Family Services is honored to work with industry leaders throughout the San Francisco Bay Area. Corporate partnerships provide critical funding to support our programs, as well as provide an important pipeline of employee volunteers.

Our corporate partners maintain annual giving for the greatest impact in our work to provide successful, comprehensive services to homeless and at-risk families in our community. And with more than 300 corporate employees volunteering in groups for special projects and events or individually on a weekly basis, our corporate engagement program continues to grow and succeed.

### **Builder \$100K+**

Twitter

### **Venture \$50K+**

Genentech Foundation  
JP Morgan Chase Foundation  
San Francisco Private Dining Venues  
Sunhill Corporation

### **Angel 25K+**

Litman Gregory Asset Management  
The McKenzie Foundation of  
San Francisco  
Qatalyst Partners  
Sutter Health CPMC  
Wells Fargo  
Zendesk Neighbor Foundation

### **Seed 10K+**

Bank of America Foundation  
BNP Paribas USA  
Cisco Systems Foundation  
Deutsche Bank Foundation  
Kaiser Permanente  
Keen  
Meyers+Engineers

### **Accelerator \$5K+**

BlackRock  
Cathay Bank Foundation  
Comerica Bank  
Credit Suisse  
CVC Capital Partners  
George P. Johnson  
Gliffy  
MUFG Union Bank Foundation  
Nordstrom  
Skin Spirit

### **Starter \$3K+**

Emerald Fund, Inc.  
In-N-Out Burger Foundation  
Merrill Lynch - Venture Services Group  
UBS Financial Services Inc.



# Adopt-a-Family

The 2017 holiday season was our 20th year matching Compass families with generous members of the community. And, once again, we set a new record with 400 donors adopting 425 families.

Our Adopt-a-Family participants help to brighten the winter holidays for our families in need. They also raised an additional \$34,900 to offset the costs of administering the project. That means more funds to help our families with shelter, housing, childcare, counseling, educational and employment assistance, and other critical support services.

Thank you to all participating individuals, families, corporate teams, and civic groups for making the holidays bright by fulfilling holiday wish lists and supporting our families throughout the entire year!

Sonya Abrams  
Gypsy Achong  
Jacquelyn Ainsley  
*Alain Pinel*  
Daphne Alden  
Joy and Jonathan Alferness  
*Allied World*  
*Amazon*  
Abby Anderson  
Diane Anderson  
Martha Angove and Carl Kaufman  
*AppLift Inc.*  
Katie Archbold  
*Architectural Resources Group*  
Katie Ball  
*Bank of America*  
Valerie Baptiste  
Shari Bard  
Trudy Barnes and Chris Pavich  
Andrew Barrientos  
Lindsay Beckham  
Jennifer and Ravi Bhalla

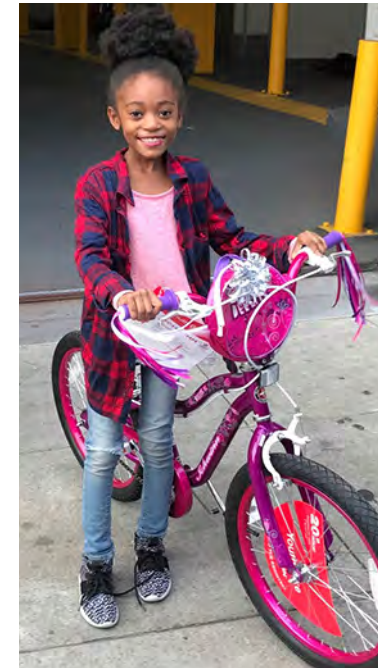
Andrew Birnbryer  
Sascha Blevins  
Lisa Borah-Geller  
Amanda Borgiotti  
Oriana and Zachary Bosin  
*The Boston Consulting Group*  
Robin Brewer  
Misty Brewster



Travis Brier  
*Bright Search Group*  
*BRR Architecture*  
Lesley Bunim  
Kimberly Burns  
Kristen Burns  
Tiffany Button  
Ninive and Jean-Claude Calegari  
*Camp + King*  
*Capital Impact Partners*  
Catherine Carney



Sarah Carver  
Sabrina Catahan  
Anne Chambers  
Elizabeth Chandler  
*Chapman and Cutler, LLP*  
Cortney Cino  
Colby and Chris Clark  
*ClimateWorks Foundation*  
*Clovis Oncology*  
Julie Cochrane  
Julie and Will Cockle  
Lanier Coles  
Kristina Conaway  
Christine Connors  
Martha Conte  
Danny Conway  
Carly Cooper  
Deborah Costigan  
Samantha and Shawn Cross  
*Crowe Horwath, LLP*  
Linda Curtis  
Katherine Dahm  
Sharon de Guzman  
Andrea and Chris Dehner  
Rachel Delphin  
Christine DeSanze  
*DGA Planning Architecture and Design*  
Danielle Diedrick  
Lori Dietrich  
Elizabeth Dillon  
*Docker*  
Lindy Donnelly  
Matthew Downs  
Kim Drew  
Catherine Drybrough  
Tenah and Chad Dyer  
*DZH Phillips, LLP*  
Kelli Evans  
*Federal Reserve Bank of San Francisco*



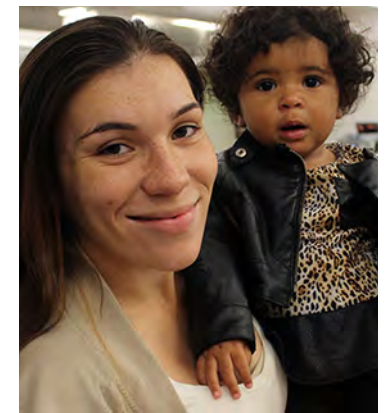
Jennie and Konrad Feldman  
Paloma Figueroa  
*First Republic Bank*  
Lindy Fishburne  
Susan Fleming  
Lauren and Jamie Ford  
Jess Forster  
Tomoko and Don Fortune  
*Fox Rothschild, LLP*  
Stephanie and Dick Fredericks  
Kim Fredkin  
Reina Fujii  
Andrea Gallese  
Frank Gallo  
Leah Garvin  
Beth and James Gassel  
Margaret Gilbreth  
Angella Gioukaris  
Kristin Gleeson

Max Boyer Glynn and David Glynn  
 Zoe Gould  
 Erica and Ken Gregory  
 Ashley Hanson  
 Kate Harbin and Adam Clammer  
 Meghan and Greg Harris  
 Suzanne and Juan Harrison  
 Jennifer Hart and Zach Miller  
 Lisa Hockin  
 Alex and Jordan Hoffner  
 Gretchen Hollstein and Jim Mayer  
 Christa Holt  
 Abby Honerkamp  
 Kerry and Sean Honey  
 Daniel Hooper  
 Sherri Howe

Kerry Howe Bourdon  
 Julia Hudson  
 Caroline Huger  
 Jessica and Brian Huppi  
 Kimberly Hymn  
*Ingenio, LLC*  
*Intuit - DCDR*  
 Stacey and Chris Irving  
 Tamara Jackson  
 Elizabeth and Steve Jeffords  
 Jennifer Jeffries  
 Jermaine Jenkins  
 Lindsay Johnson  
 Stephanie Johnson and  
 Torrey Lincoln  
 Alexandra Jorde

Amy Kangwankij  
 Stacey Kashubeck  
 Samantha Keene  
 Brian Keil  
 Kristen Kelly  
 Lottie Kendall  
 Rachel Kerkhoff  
 Olana and Zain Khan  
*Kholsa Ventures*  
 Julie Kidd  
 Joy Knox  
 Michele Kuhns  
 Jill Kuper  
 Larisa Kure  
 Jean and Sho Kuwamoto  
 Amy Lacopi

Claire-Marie Laidley  
 Eric Lambrecht  
 Kelsey Lamond  
 Danielle Lazier  
 Linh Le  
 Elizabeth Lebrun  
 Carol Lehrman  
 Jennifer Levanduski  
 Laura Levenberg  
 Robert Lew  
 Traci Lewis  
*Litman Gregory Asset  
 Management, LLC*  
 Donna Liu  
 Jodi Lopez  
 Kathleen Lopez  
 Erika MacGlennon  
 Kristin MacLaggan  
 Jennifer Madden  
 Alex Mandel  
 Bivan Mangat  
 Yanina Markova  
 Tracy and John Massaro  
 Ellen Maxon  
 Melissa Perkins McAvoy and  
 Sean Malone McAvoy  
 Deborah McCrimmon and  
 Aaron Johnson  
 Sommer McKinley  
 Shabnum Mehra  
 Ashley Melamed  
 Lora Menter  
*Merriwether & Williams  
 Insurance Services*  
 Leesa Miao and Martin Romo  
 Erin Miller  
 Jackie Miller  
 Sofia Millham  
 Jessica Milligan



Erica Missildine  
 Krista and Aaron Moatz  
 Mason and Anna Morfit  
 Courtney Morgan  
 Sarah Moynihan  
 Pam Nader  
 Elizabeth Nartker  
 Mary Nderostek  
 Katherine Nelson  
*Nelson Nygaard Consulting*  
 Natasha Nieva  
 Alexandra Nixon  
*No Mirror Movement*  
 Rachel Noble  
 Heather Nodelman  
 Rich Noreen  
*Nossaman LLP*  
 Kristin Novotny  
 Michelle and Michael Novotny  
 Susan Omura  
 Anh Oppenheimer  
 Elana O'Reilly and Sean Curran  
 Libby and Damian Ornani  
 Olympia Ortega-Gregory  
 and Kent Goshorn  
 Mike Osborne







Peggy and Craig Straley  
Karen Sun  
Julie Supan  
Leslie Tagorda  
Lisa Tarter  
Michelle Taylor  
Jessica Teach  
Andi Teggart  
Kimberly Tholen  
Scott Thomas  
Leslie Tietz  
Christine Tieu  
Hope Timberlake  
Alexandra Topper  
Charlotte and Scott Tracy  
Katie and Todd Traina  
Kathleen Tran  
Sara Tresslar

Abby and Jonathan Turin  
Jessie Turnbaugh  
Twitter  
Uber  
UCSF 10 CVT  
Verily  
Lucy Wahl  
Wells Fargo  
Matthew White  
Erin Willard  
Willis Towers Watson  
Christy Wilson  
Molly Winston  
Ian Woods  
Julie Wu  
Yahoo!  
Zendesk  
Signal Labs  
Roe Zocchi

*The OutCast Agency*  
*Pac-12 Conference*  
*Pacific Foundation Services*  
Samantha Padua  
Shane Palmer  
Needhi Parikh  
JoAnn Peach  
Anne-Marie and Wylie Peterson  
Whitney Pieper  
Charlotte and Josh Prime  
*Catalyst Partners LP*  
*QlikView*  
Angela Quon-Chan  
Kimberly Ratto  
Taylor Reid  
Melissa Reyna  
Dustin Rocke  
Sarah Rogers  
Natalie Ross  
Christina Rostampour  
Jennifer Rowe  
Sharon Rowley  
Krista Rubenstein  
Katelyn Ruby

Shaun Ruiz  
Salesforce  
*The San Francisco Foundation*  
*San Francisco Public Utilities*  
*Commission*  
Alison Sanders  
Erica Schoefer  
Laura Seery  
Tescia Seufferlein  
Rupal Shah  
Sara Shahin  
Sobia and Nadir Shaikh  
Margaret Shepard  
Ashley Shepherd  
Laura Sherr  
Dara Silveira  
Gretchen Sisson  
Julie Skaff  
Charles Slocumb  
Alex Sola-Guinto  
Lori Solomon  
Tracy Spiegelman  
*Square, Inc.*  
Kate Steinheimer  
Emily Stember  
Liz and James Steyer







# COMPASS FAMILY SERVICES

Housing. Support. Hope.

Compass Family Services is where families facing homelessness receive housing services and comprehensive support as they transition from crisis to economic stability. Having served San Francisco for over 100 years, we are the City's longest operating family safety net, and in cooperation with partner organizations, Compass Family Services will serve until the need ceases to exist.

**COMPASS FAMILY SERVICES 37 GROVE STREET SAN FRANCISCO, CA 94102**

**PHONE:** 415-644-0504 **FAX:** 415-644-0514 **WEBSITE:** COMPASS-SF.ORG **FACEBOOK:** /COMPASSFAMILYSERVICES **TWITTER:** @COMPASSSF  
**YOUTUBE:** /COMPASSSF **LINKEDIN:** /COMPANY/COMPASS-FAMILY-SERVICES